

D9010PCIP

PCI Express and SATA/SAS Protocol Trigger and Decode for Infiniium Oscilloscopes

The D9010PCIP software package for Infiniium oscilloscopes gives you the ability to trigger and decode PCIe Gen 1, 2, 3, and 4 and SATA/SAS signals. This package is compatible with Infiniium 90000, V, Z, and UXR-Series oscilloscopes.

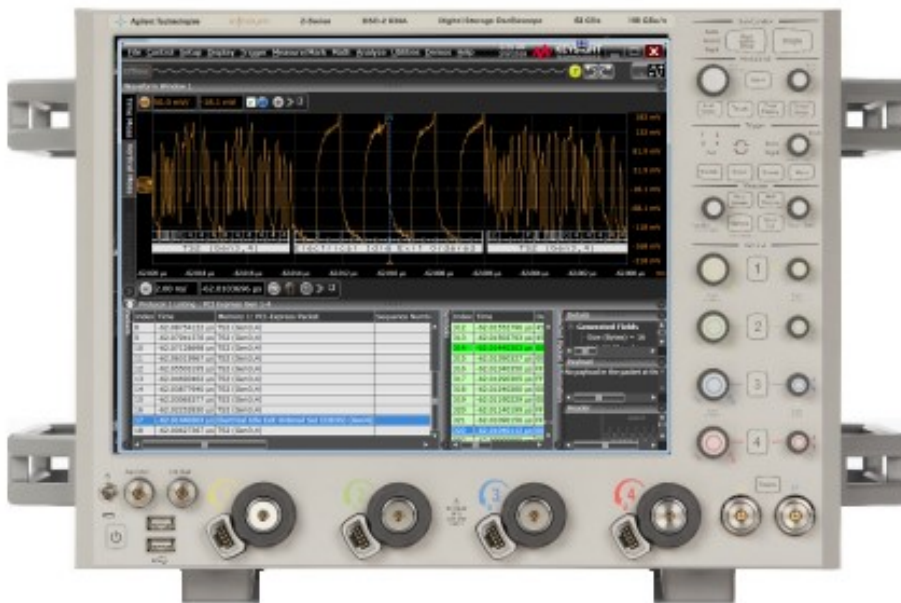


Table of Contents

Product overview	3
PCI Express	4
Features.....	4
Specifications and Characteristics.....	6
SATA / SAS.....	7
Specifications and Characteristics.....	7
Hardware Requirements	8
Recommended oscilloscopes.....	8
Recommended fixtures and cables	8
Ordering Information and Related Literature	9
Flexible Software Licensing and KeysightCare Software Support Subscriptions	9
License Terms	9
License Types.....	9
KeysightCare Software Support Subscriptions.....	9
Selecting your license.....	10
Examples.....	10
Related literature	10

Product overview

The Keysight D9010PCIP Infiniium protocol viewer software provides packet-level decode for PCI Express® and SATA/SAS signals built into a real-time oscilloscope. This software provides you with a fast, easy way to isolate signal integrity problems from logic-level coding errors on bi-directional serial data streams. This capability allows you to test, debug, and characterize your designs to the logic and link layer. D9010PCIP Infiniium protocol analyzer software has decode options that support both PCIe 4.0 at 16GT/s as well as legacy PCIe speeds of 8GT/s, 5GT/s, and 2.5GT/s. D9020ASIA is recommended for PCIe 4.0 to help open closed eyes on high-speed measurements.

SATA (Serial Advanced Technology Attachment) and SAS (Serial Attached SCSI) serial buses are interfaces used to connect ATA hard drives to a computer's motherboard. However, since these protocols transfer bits serially, using a traditional oscilloscope has limitations. Manually converting captured 1's and 0's to protocol requires significant effort, can't be done in real-time, and includes potential for human error. As well, traditional scope triggers are not sufficient for specifying protocol-level conditions.

Extend your scope capability with the Keysight Technologies D9010PCIP triggering and decode application. This application makes it easy to debug and test designs that include PCIe, SAS, and SATA buses using your Infiniium Series oscilloscope. D9020PCIP uses built-in, intelligent, automated setup algorithms to configure the software to decode your serial bus with little more than a single button push.

- Set up your scope to show protocol decode in less than 30 seconds.
- Get access to a rich set of integrated protocol-level triggers.
- Save time and eliminate errors by viewing packets at the protocol level.
- Use time-correlated views to quickly troubleshoot serial protocol problems back to their timing or signal integrity root cause.

Get access to a rich set of integrated protocol-level triggers. The application includes a suite of configurable protocol-level trigger conditions specific to PCIe, SAS, and SATA. When serial triggering is selected, the application uses software-based triggering. The oscilloscope takes signals acquired using scope channels and reconstructs protocol frames after each acquisition. It then inspects these protocol frames against specified protocol-level trigger conditions and triggers when the condition is met.

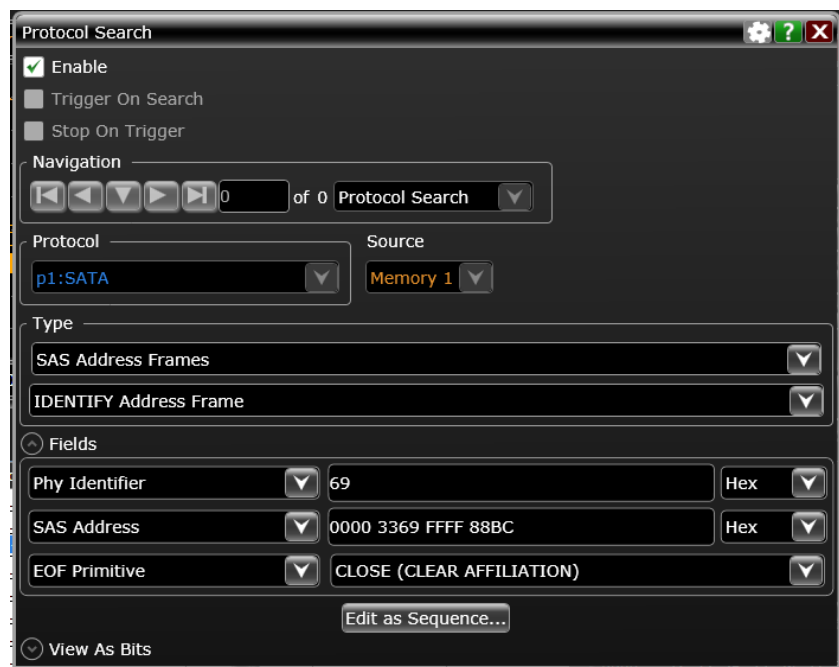


Figure 1. Extreme levels of detail afforded by the SAS protocol search.

PCI Express Features

The N8816B Infiniium protocol viewer software offers several features to simplify the validation of your PCI Express designs:

- Setup wizard for quick setup, configuration, and test
- Packet-level decode of ordered sets as well as link and logical physical layers
- Serial data analysis with 128/130 bit streams (Gen3, Gen4)
- Serial data analysis with 8B/10B symbols (Gen1, Gen2)
- Decode of scrambled and unscrambled symbols
- Bi-directional symbol and packet level decode
- Simultaneous display of packet/symbol lists and waveform overlay
- Capability to save symbol and packet data lists to .csv and .txt files
- Packet decode details tab provides detailed information on packets:
 - Channel information
 - Listing index
 - Link ordered set type
 - Control symbols
 - Reserved-bit settings
 - Data payload popup
 - CRC
 - Packet length
- Payload display shows data payload
- Unique packet-waveform correlation marker “blue line” makes it easy to scroll through waveforms to view synchronized
 - Comprehensive serial search capabilities
 - Trigger and stop on search
 - Primitive, control symbol, and packet search capability

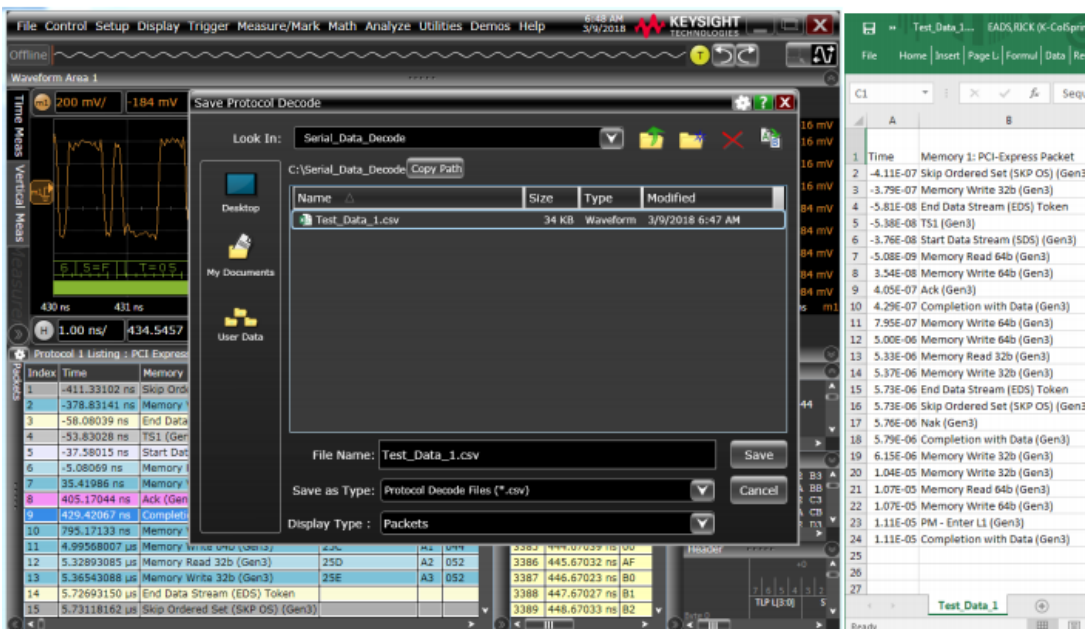


Figure 2. Saving symbol, packet, and waveform data.



Figure 3. The auto-setup button for PCI Express. SAS and SATA have similar auto-setup buttons.

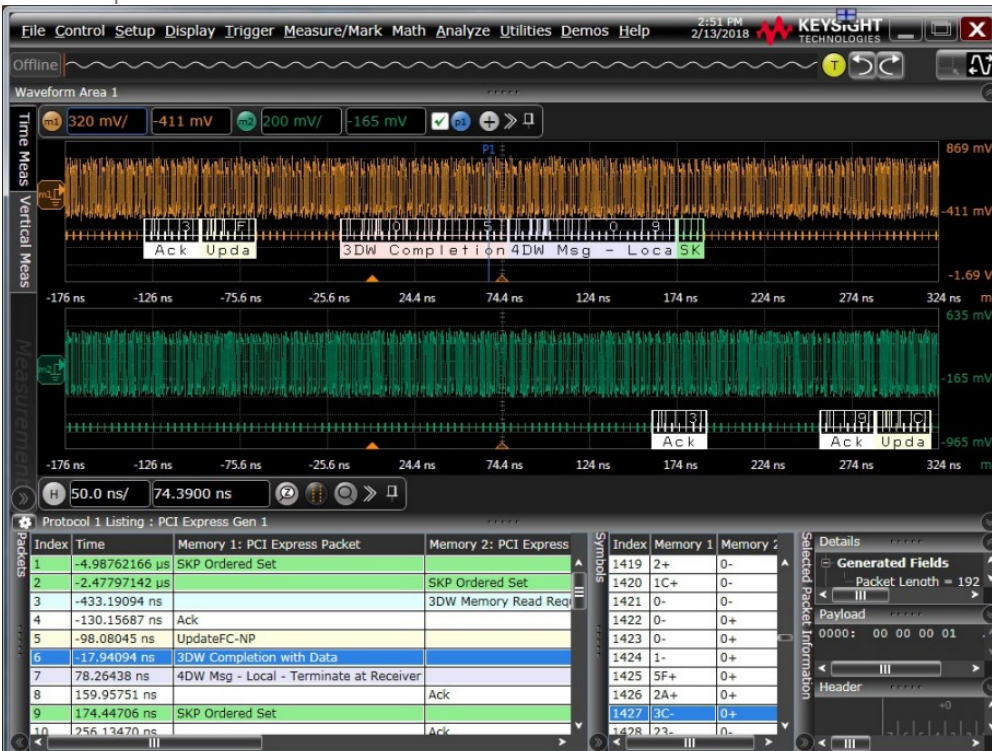


Figure 4. a bi-directional waveform packet and listing window are displayed simultaneously

Specifications and Characteristics

Signal sources	Any analog channel Any waveform math Any waveform memory
Protocols supported	PCI Express Gen 1, 2, 3 and 4
Auto setup	Automatically configures trigger levels, decode thresholds, sample rate, memory depth, holdoff, trigger and more for each generation of PCI Express
Decode options	Symbol display format: K/D codes, label, 8-bit, 10-bit (Gen 1) Descramble: yes or no Electrical IDLEs are present: yes or no Lane selection (per data source): 0 Single, [0-31] Multi
Trigger options (via search) ^[1]	Gen 1, 2 Ordered sets, FTS, EIOS, EIEOS, TS, TS1, TS2, compliance patterns Gen 3, 4 Ordered sets, SKP, control SKP, FTS, EIOS, EIEOS, SDS, TS, TS1, TS2, invalid zero sequence, compliance patterns

1. For a complete list of all trigger fields and variables, please contact Keysight.

SATA / SAS

Specifications and Characteristics

Signal sources	Any analog channel Any waveform math Any waveform memory
Data rates	1.5 Gbps, 3 Gbps, 6 Gbps
Auto setup	Automatically configures trigger levels, decode thresholds, sample rate, memory depth, holdoff, and trigger
Decode options	Symbol display format: K/D codes, label, 8-bit, 10-bit Descramble: yes or no Electrical IDLEs are present: yes or no
Trigger options	SATA primitives SATA FIS types Common primitives SAS primitives SAS address frames SAS frames SSP frames Vendor-defined frames SMP frames Symbol sequence Errors

Hardware Requirements

Recommended oscilloscopes

The protocol triggering and decode software is compatible with Keysight Infiniium 90000, V, Z, and UXR Series oscilloscopes with operating software revision 6.30 or higher. Use the below table to determine what bandwidth model to select.

Standard	Data Rate	Recommended Bandwidth
PCIe Gen 1	2.5 GT/s	6 GHz
PCIe Gen 2	5 GT/s	12 GHz
PCIe Gen 3	8 GT/s	20 GHz
PCIe Gen 4	16 GT/s	25 GHz
SATA Gen 1	1.5 Gbps	4 GHz
SATA Gen 2	3 Gbps	12 GHz
SATA Gen 3	6 Gbps	16 GHz
SAS	3 Gbps	8 GHz
SAS-2	6 Gbps	16 GHz
SAS-3	12 Gbps	30 GHz

Recommended software, fixtures and cables

Please note that although only one probe and probe head are required it is recommended that you order two differential probes and probe heads – one of each direction of the signal.

Description	Keysight Model Number(s)	Comments
SATA / SAS test accessories		
SATA Gen3 receptacle adapter	Wilder Technologies (https://www.wilder-tech.com/en/products/sata/sata-gen3)	
DC blocking capacitor (26.5 GHz)	11742A	Quantity 2
InfiniiMax II 12 GHz differential probe	1169A	Quantity 2
InfiniiMax II SMA probe adapter	N5380B	Quantity 2
Diff. probe connectivity kit	E2669A	
PCI Express test accessories		
InfiniiMax III 25 GHz probe amplifier	N2802A	
SMA probe head	N5444A	
InfiniiMax III QuickTip probe head	N2849A	
InfiniiMax III 26 GHz solder-in tip	N2836A	
Matched pair of SMA cables	15442A	
Serial data equalization software	D9020ASIA	

Ordering Information and Related Literature

Flexible Software Licensing and KeysightCare Software Support Subscriptions

Keysight offers a variety of flexible licensing options to fit your needs and budget. Choose your license term, license type, and KeysightCare software support subscription.

License Terms

Perpetual – Perpetual licenses can be used indefinitely.

Time-based – Time-based licenses can be used through the term of the license only (6, 12, 24, or 36 months).

License Types

Node-locked – License can be used on one specified instrument/computer.

Transportable – License can be used on one instrument/computer at a time but may be transferred to another using Keysight Software Manager (internet connection required).

USB Portable – License can be used on one instrument/computer at a time but may be transferred to another using a certified USB dongle (available for additional purchase with Keysight part number E8900-D10).

Floating (single site) – Networked instruments/computers can access a license from a server one at a time. Multiple licenses can be purchased for concurrent usage.

KeysightCare Software Support Subscriptions

Perpetual licenses are sold with a 12 (default), 24, 36, or 60-month software support subscription. Support subscriptions can be renewed for a fee after that.

Time-based licenses include a software support subscription through the term of the license.

KeysightCare Software Support Subscription provides peace of mind amid evolving technologies.

- Ensure your software is always current with the latest enhancements and measurement standards.
- Gain additional insight into your problems with live access to our team of technical experts.
- Stay on schedule with fast turnaround times and priority escalations when you need support.

Selecting your license

- Step 1.** Choose your software product (eg. D9010PCIP).
- Step 2.** Choose your license term: perpetual or time-based.
- Step 3.** Choose your license type: node-locked, transportable, USB portable, or floating.
- Step 4.** Depending on the license term, choose your support subscription duration.

Examples

If you selected:	Your quote will look like:	
D9010PCIP node-locked perpetual license with a 12-month support subscription	Part Number	Description
	D9010PCIP	Advanced PCIe Protocol Decode/Trigger Software
	R-B5P-001-A	Node-locked perpetual license
	R-B6P-001-L	KeysightCare software support subscription, node-locked–12 months
D9010PCIP transportable time-based 6-month license	Part Number	Description
	D9010PCIP	Advanced PCIe Protocol Decode/Trigger Software
	R-B4P-001-F	6-months, node-locked KeysightCare software support subscription

To configure your product and request a quote:

<http://www.keysight.com/find/software>

Contact your Keysight representative or authorized partner for more information or to place an order:

www.keysight.com/find/contactus

Related literature

Type	Description / URL
Brochure	Infiniium S-Series (500 MHz to 8 GHz real time oscilloscope)
Brochure	Infiniium V-Series (8 GHz to 33 GHz real time oscilloscope)
Data Sheet	Infiniium UXR Series (13 GHz to 110 GHz real time oscilloscope)
Brochure	30 Things Only Infiniium Oscilloscopes Can Do

Learn more at: www.keysight.com

For more information on Keysight Technologies' products, applications or services, please contact your local Keysight office. The complete list is available at: www.keysight.com/find/contactus

