

Scienlab Emulator Control

SL1092A



Emulator Control Operation Software License

Keysight's Scienlab Emulator Control is a software for system parameterization, visualization of the system status and manual control of the Scienlab Emulators. The installation will be done on customer computer with Microsoft Windows 7x (or later) Operating System.

The software enables:

- Adjustment of current and voltage limits and alarm limits
- Listing of current warnings, fault annunciation, and general system status
- Information of all actual values
- Emergency stop alarm or resulting error message receipt and deletion

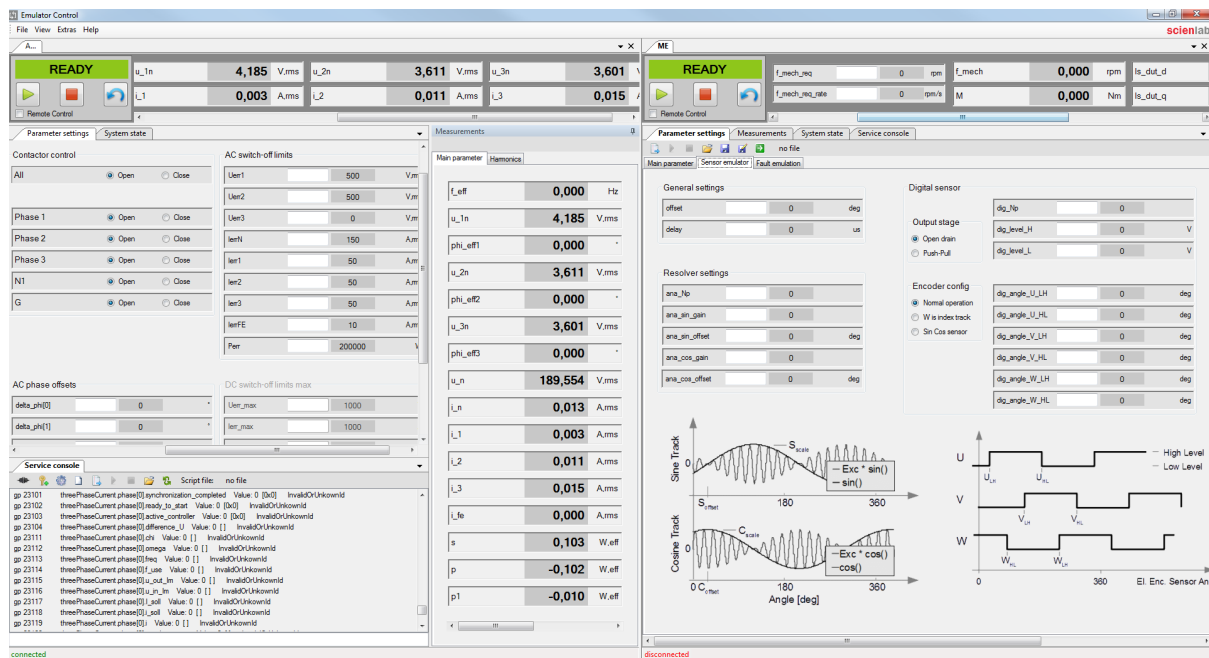


Figure 1. Screenshot Emulator Control

Extend the Capabilities of Your Test Solution

SL104XA Scienlab Machine Emulator Series for Automotive Inverter Testing

The Scienlab Machine Emulator, an inverter test system from Keysight, emulates the characteristics of electrical machines. It enables you to operate and test your traction inverters independently of the real environment.

- Emulation of complex machine correlations without mechanical restrictions
- High-quality modeling of electrical, even not-yet-existing, machines (synchronous and induction machines)
- No risks from rotating shafts or vibrations, and no batteries located at critical operation points
- Protection of inverter and test bench through parameterization of limit values
- Stable and intuitive control software
- Robust hardware designed for 24/7 operation
- Efficient, bidirectional energy flow

Find out more about the [SL104XA Series Scienlab Machine Emulator for Inverter Testing](#).

SL104XX Scienlab Dynamic DC Emulator Series

With bi-directionality, integrated DC voltage and current controllers, high dynamics, and its regenerative energy feedback capacity, the Scienlab Dynamic DC Emulator provides an all-in-one system for efficient and effective testing of the power electronic components in electric vehicles (EV) and electric vehicle supply equipment (EVSE).

- Test your power electronics and charging technology efficiently
- Covers high voltage and 48 V applications testing
- Capable to perform bi-directional mode testing, enabling EV emulation as a sink, or charging infrastructure as a source
- Capable of real-time test
- Emulate any EV and EVSE through an openly accessible state machine
- Increase the power through parallel connection of several emulators

Find out more about the [SL104XX Series Scienlab Dynamic DC Emulator](#).

SL1200A Scienlab Regenerative 3-Phase AC Emulator Series

The SL1200A series was designed to handle all your 3-phase AC test needs up to 1200 VAC, from 30 to 630 kVA without the need for a transformer. Two voltage ranges are available: 600 and 1200 VAC. The 600 VAC models are ideal for low voltage inverter test as well as EV and EVSE charging test applications. The 1200 VAC models allow for (HVRT) testing at the IEC LV-AC limit without the need for a large, complex test setup.

- Covers AC test needs; up to 1200 VL-L; up to 130 A; up to 630 kVA
- Achieve 1200 VL-L at full specifications without extra equipment, such as a transformer
- Save energy with 100% regenerative (bidirectional) power solution with > 85% efficiency
- Get up and running immediately with intuitive soft front panel (SFP)
- Feel confident with complete, one-vendor solution of hardware, software, consulting, and support services worldwide for many applications, such as EVSE/EV charging test

Find out more about the [SL1200A Series Scienlab Regenerative 3-Phase AC Emulator](#).

Learn more at: www.keysight.com

For more information on Keysight Technologies' products, applications or services, please contact your local Keysight office. The complete list is available at: www.keysight.com/find/contactus

