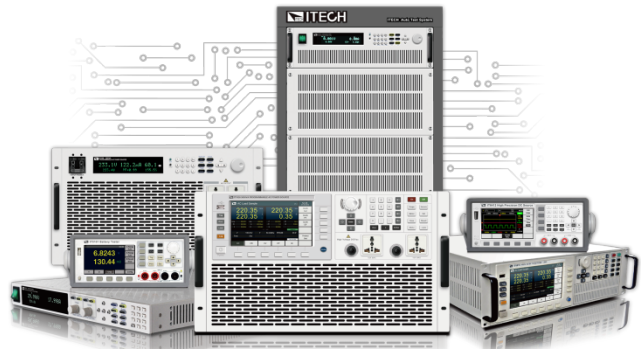


IT-M7700 Demo Software Installation Instruction



Model: IT-M7721/IT-M7722/ITM7721L/IT-M7722L

Version: V1.0

Notices

© Itech Electronic, Co., Ltd. 2019

No part of this manual may be reproduced in any form or by any means (including electronic storage and retrieval or translation into a foreign language) without prior permission and written consent from Itech Electronic, Co., Ltd. as governed by international copyright laws.

Manual Part Number

IT-M7700 Demo-400000

Revision

1st Edition: December. 31,

2019

Itech Electronic, Co., Ltd.

Trademarks

Pentium is U.S. registered trademarks of Intel Corporation.

Microsoft, Visual Studio, Windows and MS Windows are registered trademarks of Microsoft Corporation in the United States and/or other countries and regions.

Warranty

The materials contained in this document are provided “as is”, and is subject to change, without prior notice, in future editions. Further, to the maximum extent permitted by applicable laws, ITECH disclaims all warrants, either express or implied, with regard to this manual and any information contained herein, including but not limited to the implied warranties of merchantability and fitness for a particular purpose. ITECH shall not be held liable for errors or for incidental or indirect damages in connection with the furnishing, use or application of this document or of any information contained herein. Should ITECH and the user enter into a separate written agreement with warranty terms covering the materials in this document that conflict with these terms, the warranty terms in the separate agreement shall prevail.

Technology Licenses

The hardware and/or software described herein are furnished under a license and may be used or copied only in accordance with the terms of such license.

Restricted Rights Legend

Restricted permissions of the U.S. government. Permissions for software and technical data which are authorized to the U.S. Government only include those for custom provision to end users. ITECH provides this customary commercial license in software and technical data pursuant to FAR 12.211 (Technical Data) and 12.212 (Computer Software) and, for the Department of Defense, DFARS 252.227-7015 (Technical Data – Commercial Items) and DFARS 227.7202-3 (Rights in Commercial Computer Software or Computer Software Documentation).

Safety Notices

CAUTION

A CAUTION sign denotes a hazard. It calls attention to an operating procedure or practice that, if not correctly performed or adhered to, could result in damage to the product or loss of important data. Do not proceed beyond a CAUTION sign until the indicated conditions are fully understood and met.

WARNING

A WARNING sign denotes a hazard. It calls attention to an operating procedure or practice that, if not correctly performed or adhered to, could result in personal injury or death. Do not proceed beyond a WARNING sign until the indicated conditions are fully understood and met.



NOTE

A NOTE sign denotes important hint. It calls attention to tips or supplementary information that is essential for users to refer to.

Content

Chapter1	Introduction	1
1.1	Software Introduction	1
1.2	Software Matching Relationship and Mode of Access.....	1
Chapter2	Installing Software	2
2.1	Installing Operating System.....	2
2.2	Installing NI VISA	2
2.3	Installing Demo Software	5

Chapter1 Introduction

1.1 Software Introduction

IT-M7700 Demo Software is a kind of easy-to-use and practicable control software designed by Itech Electronics Co., Ltd. It is applicable to Itech IT-M7700 series power supply. With this software, you can take all operations for power supply front panel via computer control and enjoy great convenience in remote control. This software supports RS232, USB, GPIB and Ethernet serial port communication.

1.2 Software Matching Relationship and Mode of Access

Software matching relationship required by IT-M7700 Demo software is as follows:

Item	Version	Obtained Method
Operating System	Windows7/Windows8/Windows10	Download from the official website
NI-VISA	V16.0 or above	Download according to the original regulations, the download site is: http://search.ni.com/nisearch/app/main/p/bot/no/ap/tech/lang/en/pg/1/sn/ssnav:dw/q/NI%20VISA%20DOWNLOAD/
OFFICE	2007 or above	Download from the official website
IT-M7700 Demo Software	Ver 1.0.6	Obtained from delivery CD

Chapter2Installing Software

2.1 Installing Operating System

Install operating systems of corresponding versions based on installation requirements. For detailed installation steps, refer to corresponding operation guidance on Windows operating system installation software.

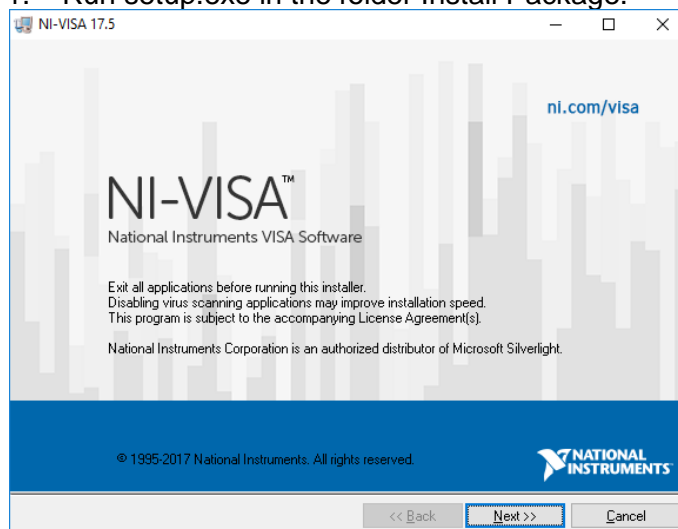
To use Export function of Demo test software, be sure to install OFFICE software.

2.2 Installing NI VISA

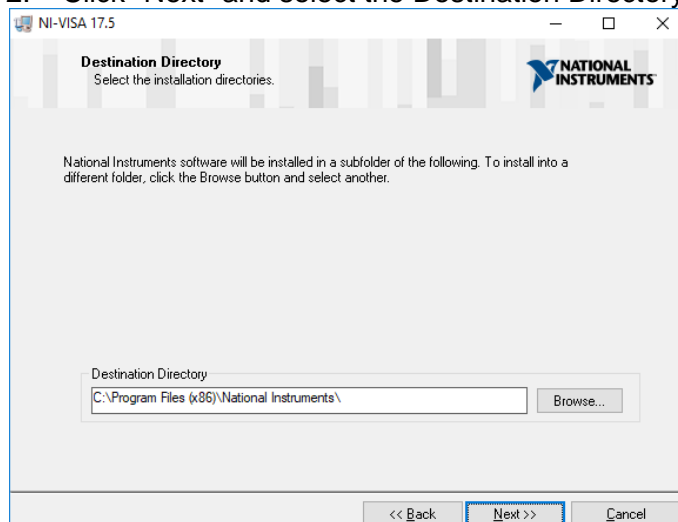
NI-VISA is a VISA I/O standard implemented by NI. It provides the programming interfaces between hardware and application development environments like NI LabVIEW, LabWindows/CVI and Measurement Studio (used for Microsoft Visual Studio).

Operation Steps

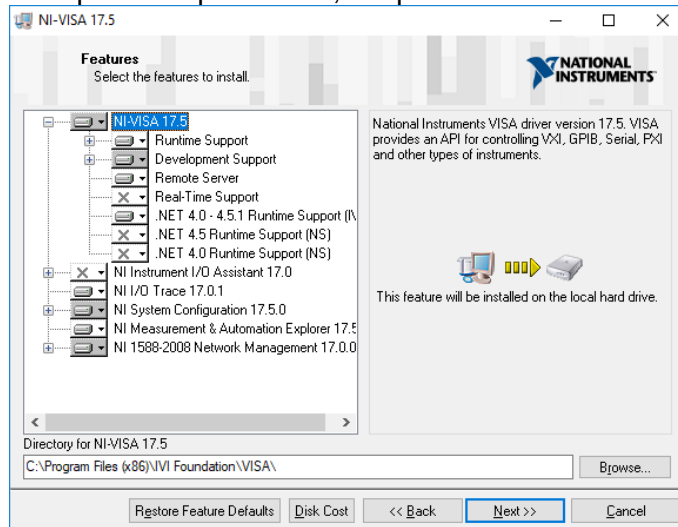
1. Run setup.exe in the folder Install Package.



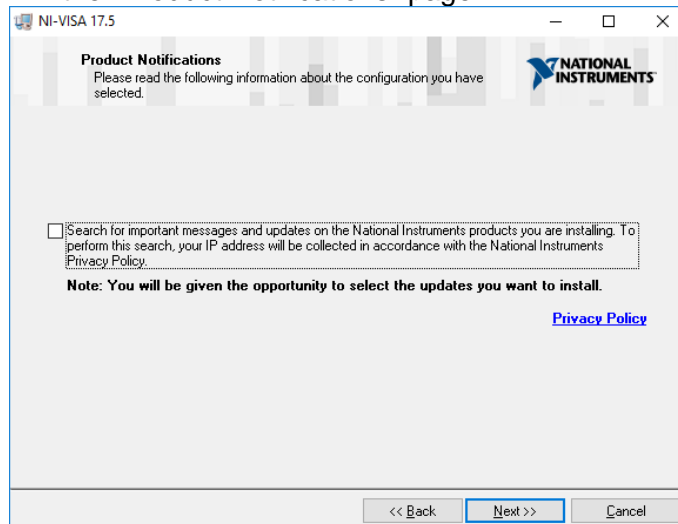
2. Click "Next" and select the Destination Directory.



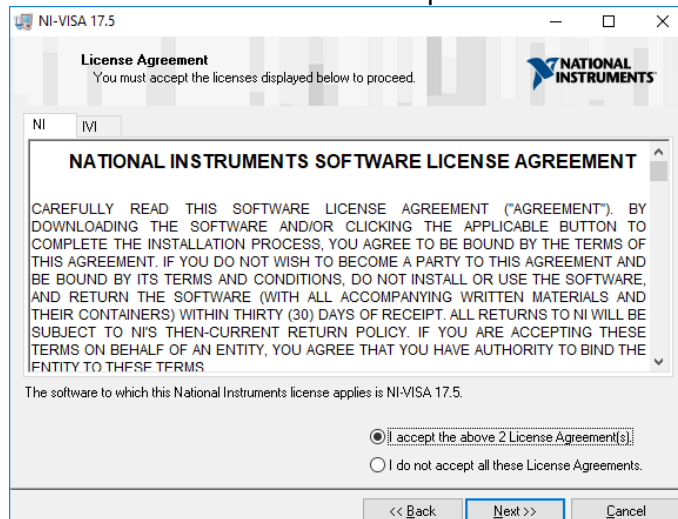
- Click “Next” and select the components to be installed. If there are no special requirements, keep as default.



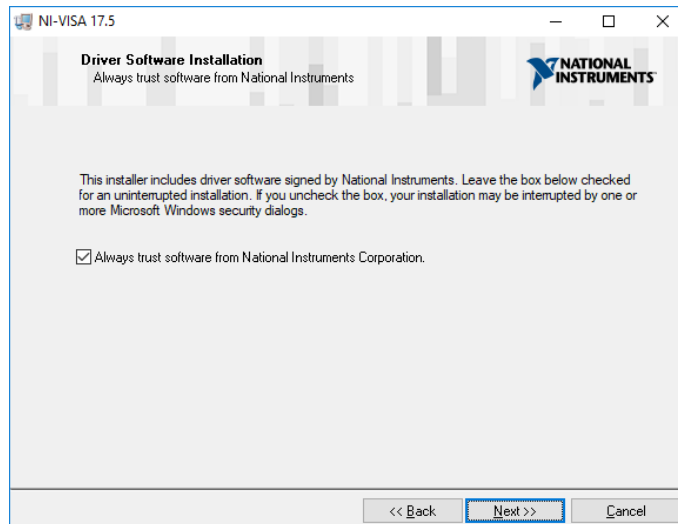
- Click “Next” and select whether to check the check box as shown below in the “Product Notifications” page.



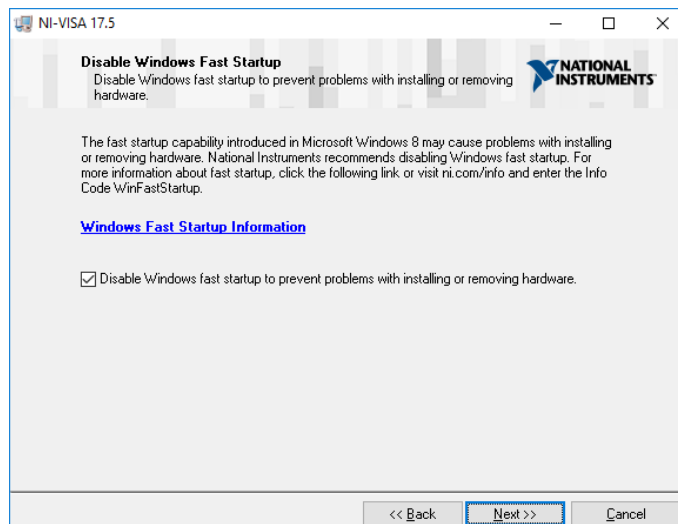
- Click “Next”. Read and accept the terms in the License Agreement.



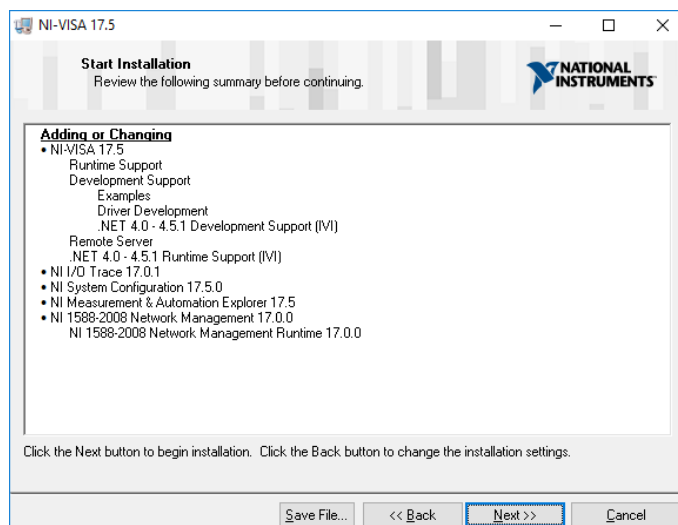
6. Click "Next".



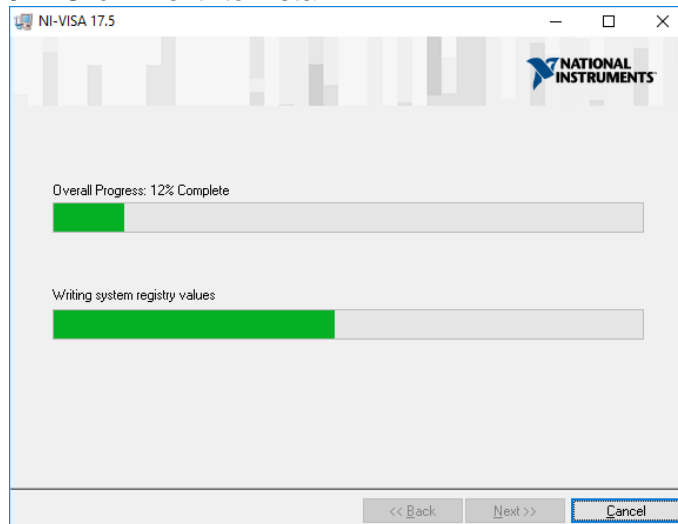
7. Click "Next".



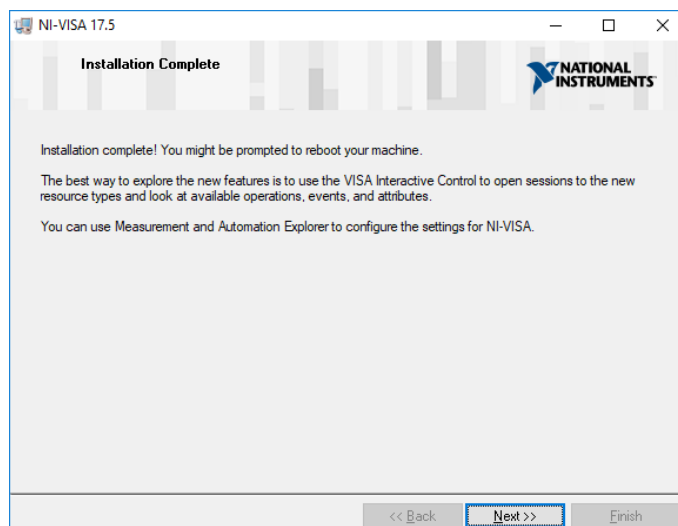
8. Click "Next".



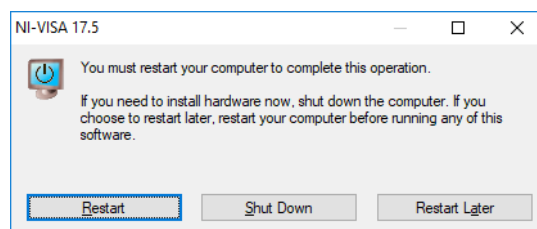
9. Click “Next” to install.



10. After the installation is complete, the following page displays.



11. Click “Next”, and the message of “Restart Computer” will pop up. Restart the computer to make driver installation effective.



2.3 Installing Demo Software

1. Obtain the software installation package from the CD.
2. Decompress the IT-M7700 Demo Software file to the local file folder.
3. Double click IT-M7700 Demo Software.exe in the file folder to run the program. The software initial interface is described as follows:



Contact US

Thank you for purchasing ITECH products. If you have any doubt about this product, please contact us as follows.

1. Please refer to the CD-ROM of related user's manual in package.
2. Visit ITECH website www.itechate.com.
3. Select the most convenient contact for further consultation.